

2019



www.metal360.ca

1-204-355-7634

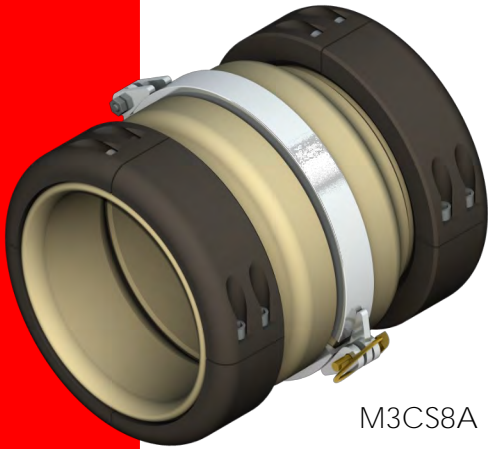
info@metal360.ca

METAL360
INC

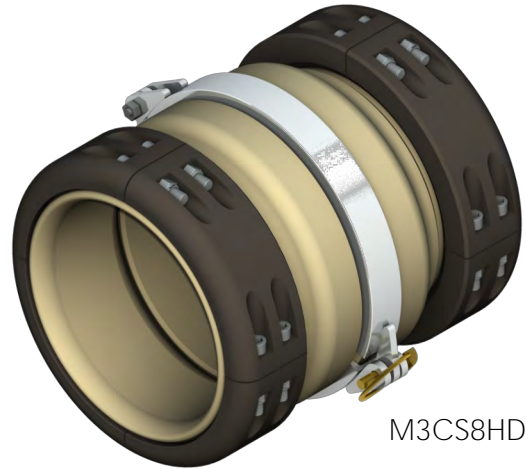
INDEX

SHUG COUPLER COMBINATIONS3
SHUG HOSE COUPLERS4
HOSE MENDERS8
SHUG BARBS10
SHUG SEGMENTS11
SHUG CLAMPS12
SHUG COUPLER PARTS13
SHUG ADAPTERS14
VIC COUPLERS16
VIC/SHUG ADAPTERS17
VIC BARBS & SEGMENTS18
CORNELL WEAR PARTS19
PIONEER WEAR PARTS21
GAUGE PROTECTORS22
COUPLER STYLES23
NOTES24
COMPANY INFO25

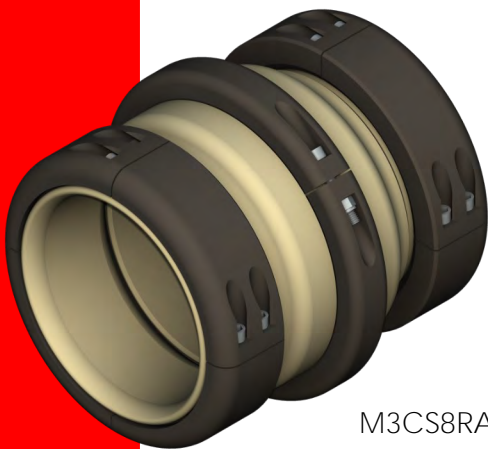
SHUG COUPLER COMBINATIONS



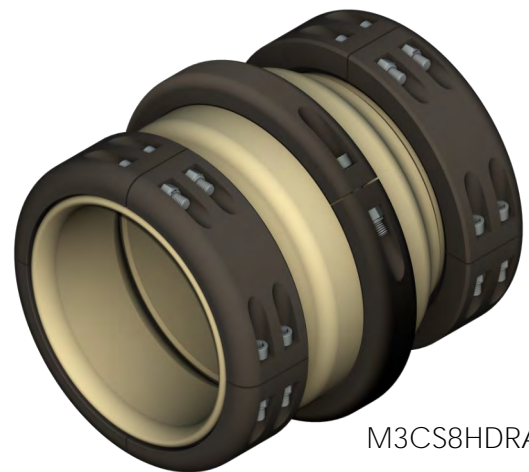
M3CS8A



M3CS8HDA



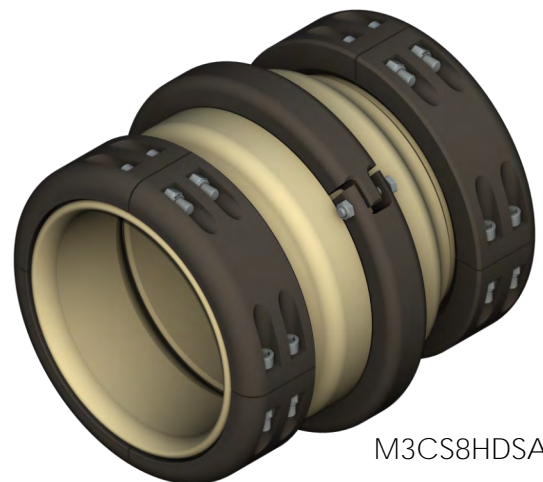
M3CS8RA



M3CS8HDRA



M3CS8SA

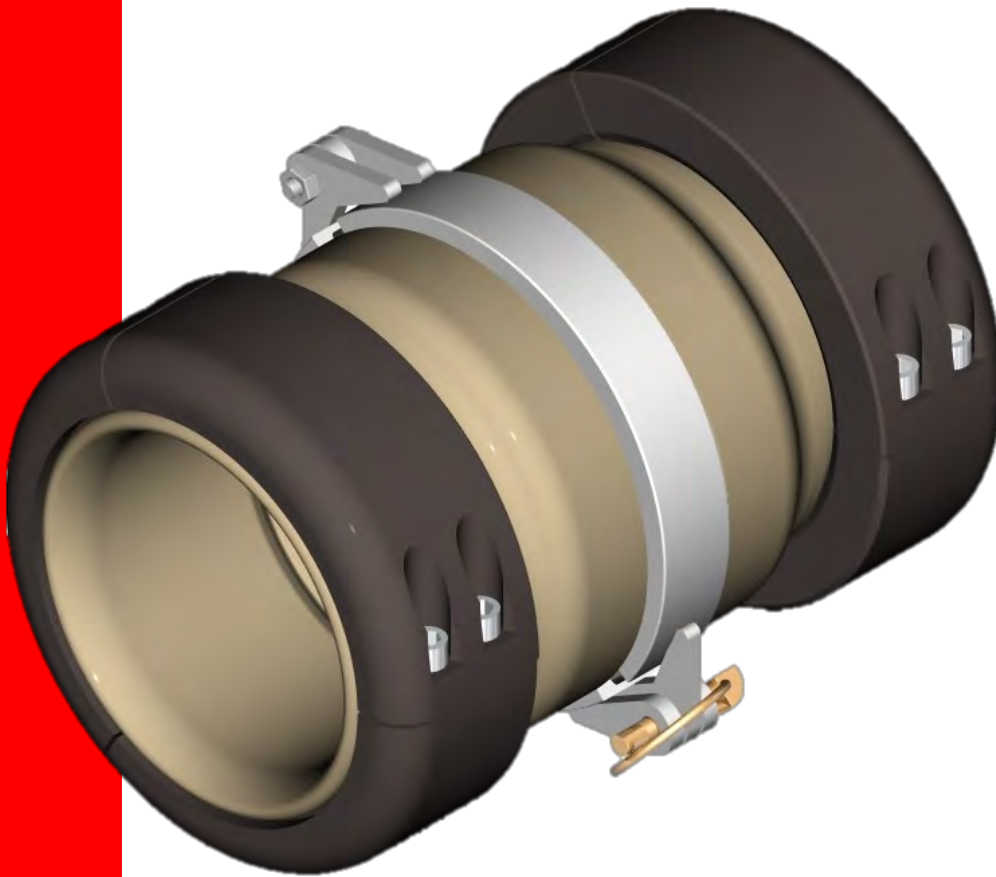


M3CS8HDSA

- Coupler sets can be ordered in these combinations
- Replace the number (8) with the diameter of hose used
- Remove the (A) if ordering plain aluminum (non anodized)

SHUG HOSE COUPLER 4" – 6"

MADE IN CANADA



Part #	Description	PSI	Lbs.	Price
M3CS4A	4" shug coupler set	300	22	
M3CS45A	4.5" shug coupler set	300	21	
M3CS5A	5" shug coupler set	300	21	
M3CS55A	5.5" shug coupler set	300	20	
M3CS6A	6" shug coupler set*	300	23	

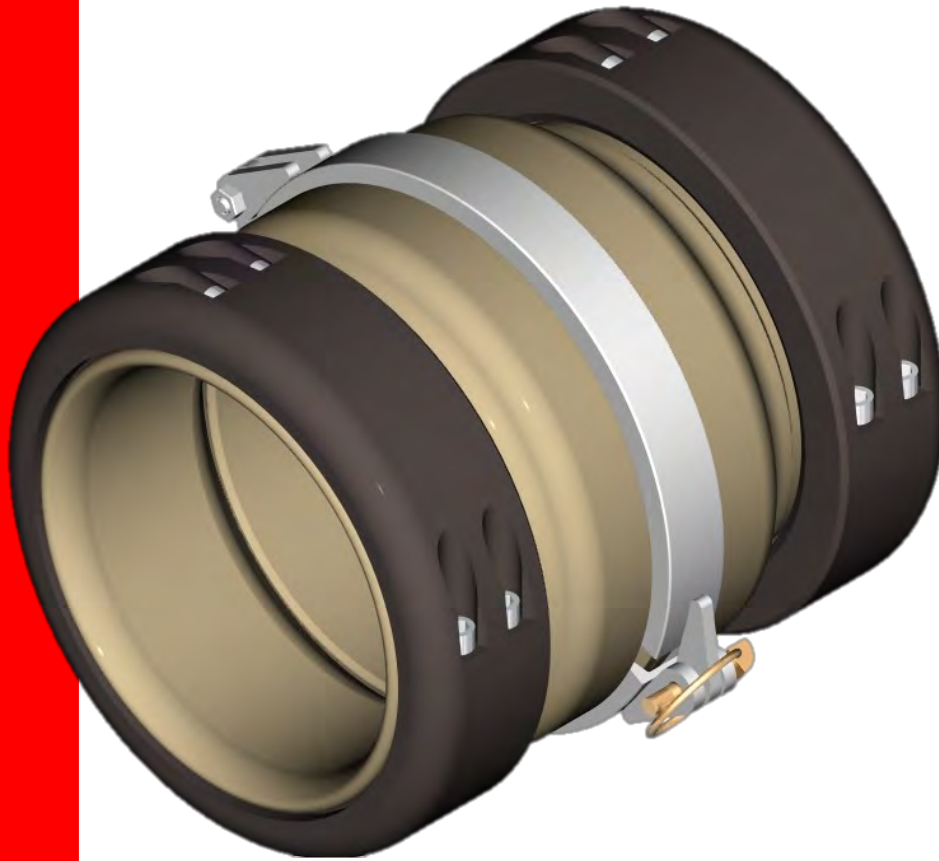
- Rib spacing 0.900" center to center
- Double bolt style, stainless
- Knurled ribs for holding strength
- 6061-T6 extruded aluminum barbs
- Type III hard anodized (plain optional)
- * picture shown

www.metal360.ca

204-355-7634

SHUG HOSE COUPLER 7" – 8"

MADE IN CANADA



Part #	Description	PSI	Lbs.	Price
M3CS7A	7" shug coupler set	300	30	
M3CS725A	7.25" shug coupler set	300	30	
M3CS8A	8" shug coupler set*	300	30	

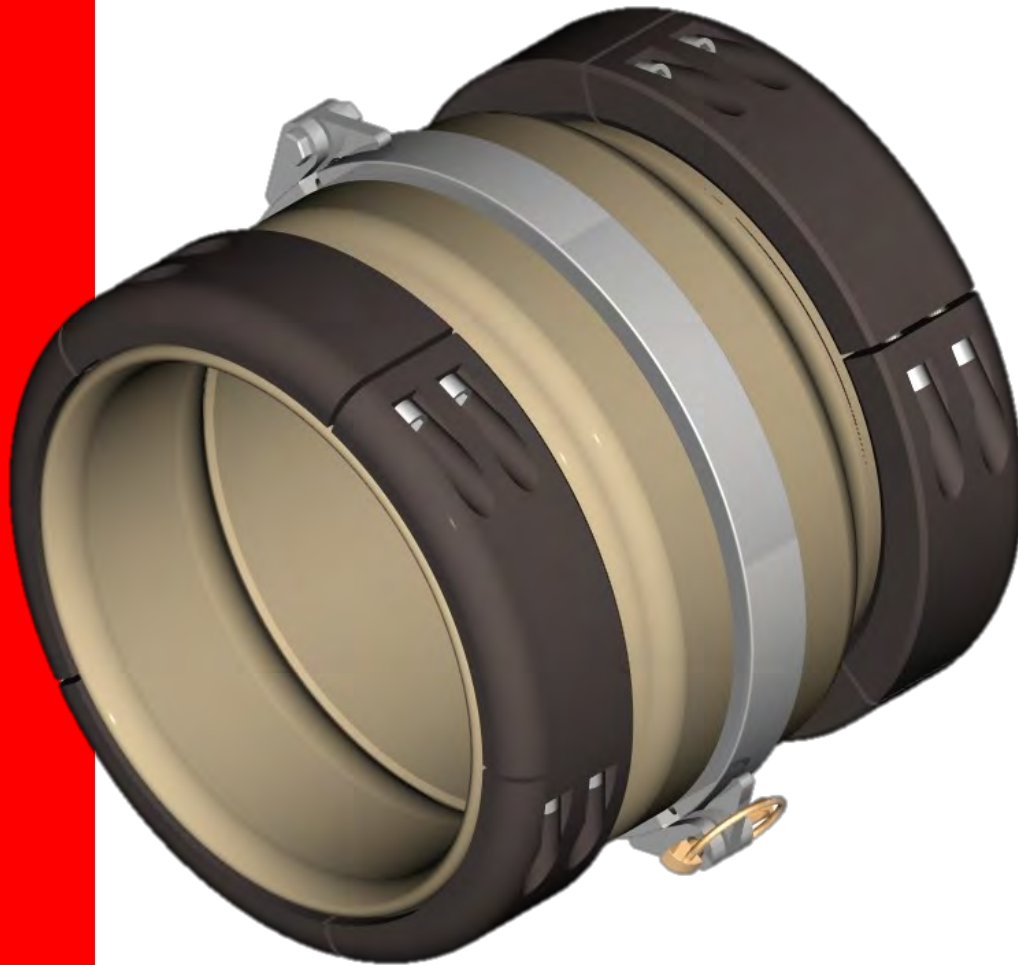
- Rib spacing 0.900" center to center
- Double bolt style, stainless
- Knurled ribs for holding strength
- 6061-T6 extruded aluminum barbs
- Type III hard anodized (plain optional)
- * picture shown

www.metal360.ca

204-355-7634

SHUG HOSE COUPLER 10"

MADE IN CANADA



Part #	Description	PSI	Lbs.	Price
M3CS10A	10" shug coupler set*	200	36	
M3CSHF10A	10" HF coupler set	200	36	

- Rib spacing 0.900" center to center
- Double bolt style, stainless
- Knurled ribs for holding strength
- 6061-T6 extruded aluminum barbs
- Type III hard anodized (plain optional)
- * picture shown

www.metal360.ca

204-355-7634

SHUG HOSE COUPLER 12"

MADE IN CANADA



Part #	Description	PSI	Lbs.	Price
M3CS12HDRA	12" shug coupler set, HD segments, HDR clamp*	200	53	

- Rib spacing 0.900" center to center
- Double bolt style, stainless
- Knurled ribs for holding strength
- 6061-T6 extruded aluminum barbs
- Type III hard anodized (plain optional)
- * picture shown

www.metal360.ca

204-355-7634

HOSE MENDERS 4" – 8"

MADE IN CANADA 



Part #	Description	PSI	Lbs.	Price
M3MCS4A	4" shug mender set	300	11	
M3MCS45A	4.5" shug mender set	300	11	
M3MCS5A	5" shug mender set	300	12	
M3MCS55A	5.5" shug mender set	300	13	
M3MCS6A	6" shug mender set*	300	14	



M3MCS7A	7" shug mender set	300	18	
M3MCS725A	7.25" shug mender set	300	18	
M3MCS8A	8" shug mender set*	300	19	

- Rib spacing 0.900" center to center
- Double bolt style, stainless
- Knurled ribs for holding strength
- 6061-T6 extruded aluminum barbs
- Type III hard anodized (plain optional)
- * picture shown

www.metal360.ca

204-355-7634

HOSE MENDERS 10"- 12"

MADE IN CANADA



Part #	Description	PSI	Lbs.	Price
M3MCS10A	10" shug mender set*	300	22	



M3MCS12HDA	12" shug mender set, HD segments*	200	34	
------------	--------------------------------------	-----	----	--

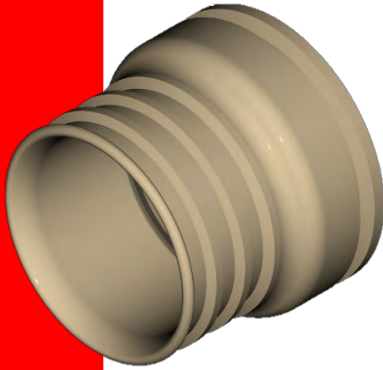
- Rib spacing 0.900" center to center
- Double bolt style, stainless
- Knurled ribs for holding strength
- 6061-T6 extruded aluminum barbs
- Type III hard anodized (plain optional)
- * picture shown

www.metal360.ca

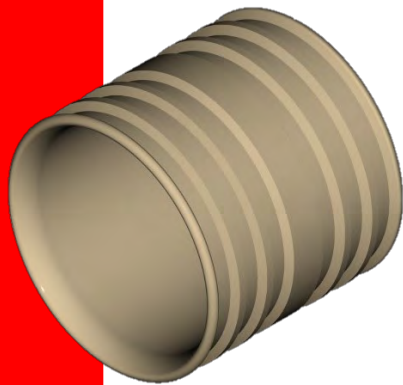
204-355-7634

SHUG BARBS

MADE IN CANADA 



Part #	Description	PSI	Lbs.	Price
M3BRB4A	4" shug coupler barb	300	4	
M3BRB45A	4.5" shug coupler barb	300	4	
M3BRB5A	5" shug coupler barb	300	4	
M3BRB55A	5.5" shug coupler barb	300	4	
M3BRB6A	6" shug coupler barb*	300	4	
M3BRB7A	7" shug coupler barb	300	5	
M3BRB725A	7.25" shug coupler barb	300	5	
M3BRB8A	8" shug coupler barb	300	5	
M3BRB10A	10" shug coupler barb	300	7	
M3BRB10HFA	10" HF coupler barb	300	7	
M3BRB12A	12" shug coupler barb	200	9	



M3MBRB4A	4" shug mender barb	300	2	
M3MBRB45A	4.5" shug mender barb	300	3	
M3MBRB5A	5" shug mender barb	300	3	
M3MBRB55A	5.5" shug mender barb	300	4	
M3MBRB6A	6" shug mender barb*	300	4	
M3MBRB7A	7" shug mender barb	300	5	
M3MBRB725A	7.25" shug mender barb	300	5	
M3MBRB8A	8" shug mender barb	300	5	
M3MBRB10A	10" shug mender barb	300	6	
M3MBRB12A	12" shug mender barb	200	11	

- Rib spacing 0.900" center to center
- Knurled ribs for holding strength
- 6061-T6 extruded aluminum barbs
- Type III hard anodized (plain optional)
- * picture shown

www.metal360.ca

204-355-7634

SHUG SEGMENTS

MADE IN CANADA



Part #	Description	PSI	Lbs.	Price
M3SEG4-3A	4" shug segment set	300	3	
M3SEG45-3A	4.5" shug segment set	300	3	
M3SEG5-3A	5" shug segment set	300	4	
M3SEG55-3A	5.5" shug segment set	300	4	
M3SEG6-3A	6" shug segment set*	300	5	

M3SEG7-4A	7" shug segment set	300	7	
M3SEG725-4A	7.25" shug segment set	300	7	
M3SEG8-4A	8" shug segment set*	300	7	
M3SEG10-5A	10" shug segment set	300	9	

M3SEG4-3HDA	4" HD shug segment set	300	3	
M3SEG45-3HDA	4.5" HD shug segment set	300	3	
M3SEG5-3HDA	5" HD shug segment set	300	4	
M3SEG55-3HDA	5.5" HD shug segment set	300	4	
M3SEG6-3HDA	6" HD shug segment set	300	5	
M3SEG7-4HDA	7" HD shug segment set	300	7	
M3SEG725-4HDA	7.25" HD shug segment set	300	7	
M3SEG8-4HDA	8" HD shug segment set*	300	7	

M3SEG10-5HDA	10" HD shug segment set	300	12	
M3SEG12-6HDA	12" HD shug segment set	200	15	

- Rib spacing 0.900" center to center
- Double bolt style, stainless
- Type III hard anodized (plain optional)
- * picture shown

SHUG CLAMPS

MADE IN CANADA



Part #	Description	PSI	Lbs.	Price
M3CL6	4-6" shug steel plated clamp*	300	3	
M3CL8	7-8" shug steel plated clamp	300	3	
M3CL10	10" shug steel plated clamp	200	4	
M3CL10HF	10" HF steel plated clamp	200	4	

- Carbon steel
- Lynch pin and bolt
- Zinc plated
- * picture shown



M3CL6HDRA	4-6" shug HD rigid clamp	300	6	
M3CL8HDRA	7-8" shug HD rigid clamp*	300	7	
M3CL10HDRA	10" shug HD rigid clamp	300	7	
M3CL10HFHDRA	10" HF HD rigid clamp	300	7	
M3CL12HDRA	12" shug HD rigid clamp	200	9	

- Heavy Duty, won't warp over time
- No sharp edges
- Single bolt and nut, stainless
- Type III hard anodized (plain optional)

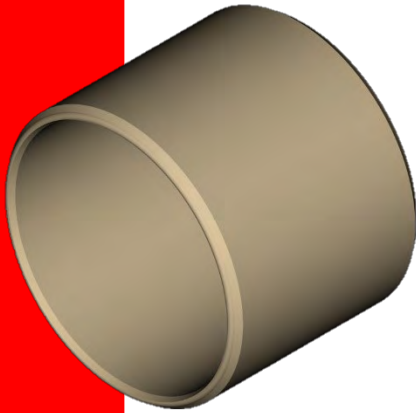


M3CL6HDSA	4-6" shug HD swivel clamp	300	6	
M3CL8HDSA	7-8" shug HD swivel clamp*	300	7	
M3CL10HDSA	10" shug HD swivel clamp	300	7	
M3CL10HFHDSA	10" HF HD swivel clamp	300	7	
M3CL12HDSA	12" shug HD swivel clamp	200	9	

- Heavy Duty, won't warp over time
- Swivel style for ease of use
- No sharp edges
- Single bolt and nut, stainless
- Type III hard anodized (plain optional)

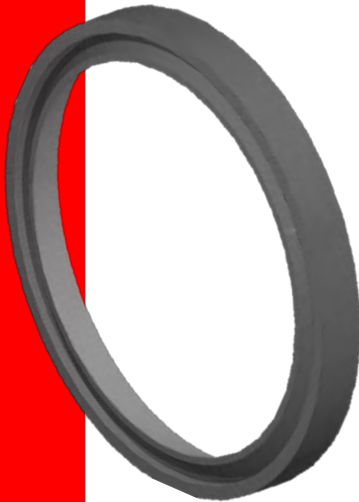
COUPLER PARTS

MADE IN CANADA 



Part #	Description	PSI	Lbs.	Price
M3SLV6A	4-6" shug insert*	300	2	
M3SLV8A	7-8" shug insert	300	3	
M3SLV10A	10" shug/HF insert	300	4	
M3SLV12A	12" shug insert	200	5	

- 6061-T6 extruded aluminum
- Type III hard anodized (plain optional)
- * picture shown



M3GSK55	4-6" shug gasket*	300	0.1	
M3GSK8	7-8" shug gasket	300	0.1	
M3GSK10	10" shug/HF gasket	300	0.1	
M3GSK12	12" shug gasket	200	0.1	

- EPDM rubber
- Precision molded
- *picture shown

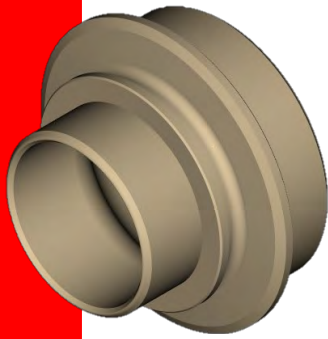


M3BLT175	1 3/4" x 3/8" SS bolt*	0.1	
M3BLT2	2" x 3/8" SS bolt	0.1	
M3BLT25	2 1/2" x 3/8" SS bolt	0.1	
M3BLT3	3" x 1/2" SS bolt	0.1	
M3LYN516	5/16" shug lynch pin*	0.1	

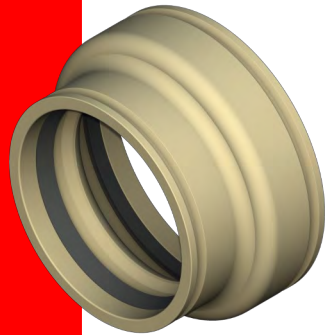
* picture shown

SHUG ADAPTERS

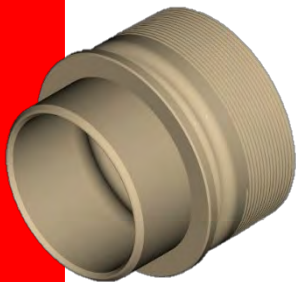
MADE IN CANADA



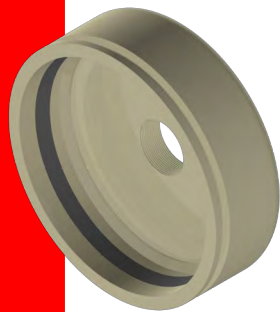
Part #	Description	PSI	Lbs.	Price
M3AMM68A	6" male shug—8" male shug*	300	6	
M3AMM810A	8" male shug—10" male shug	300	9	
M3AMM1012A	10" male shug—12" male shug	200	11	



M3AFF68A	6" female shug—8" female shug*	300	9	
M3AFF810A	8" female shug—10" female shug	300	13	
M3AFF1012A	10" female shug—12" female shug	200	18	



M3ANPT6SLV6A	6" NPT—6" shug flange*	300	3	
M3ANPT6SLV8A	6" NPT—8" shug flange	300	6	
M3ANPT8SLV8A	8" NPT—8" shug flange	300	6	
M3ANPT10SLV10A	10" NPT—10" shug flange	300	9	
M3ANPT10HFSLV10A	10" NPT—10" HF flange	300	9	



M3ACP6NPT2A	6" female shug cap—2" NPT	300	9	
M3ACP8NPT2A	8" female shug cap—2" NPT*	300	12	
M3ACP10NPT2A	10" female shug cap—2" NPT	300	15	

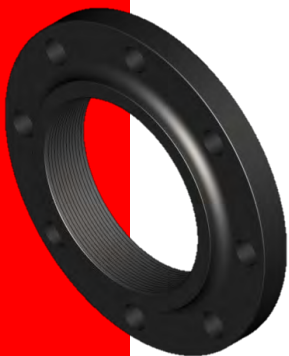
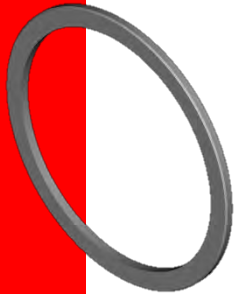
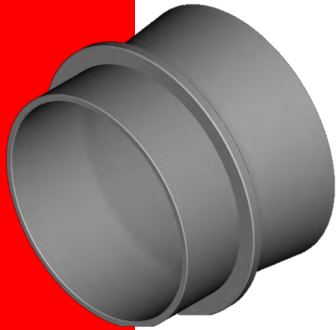
- Female adapters and caps include gaskets
- 6061-T6 extruded aluminum
- Type III hard anodized (plain optional)
- * picture shown

www.metal360.ca

204-355-7634

SHUG ADAPTERS

MADE IN CANADA



Part #	Description	PSI	Lbs.	Price
M3AWOFM55	4-6" steel weld-on adapter, flared	300	9	
M3AWOFM8	7-8" steel weld-on adapter, flared*	300	12	
M3AWOFM10	10" steel weld-on adapter, flared	300	15	
M3AWOFHFM10	10" steel HF weld-on adapter, flared	300	15	

M3AWOR55	4-6" steel weld-on adapter ring		1.3	
M3AWOR8	7-8" steel weld-on adapter ring*		1.6	
M3AWOR10	10" steel weld-on adapter ring		1.9	
M3AWOR10HF	10" steel weld-on HF adapter ring		1.9	

M3AWOFF55	4-6" steel weld-on adapter	300	8	
M3AWOFF8	7-8" steel weld-on adapter *	300	8	
M3AWFF10	10" steel weld-on adapter	300	10	
M3AWOFHFF10	10" steel weld-on HF adapter	300	10	

M3ABOFT6	6" NPT steel, bolt-on flange 150#	300	19	
M3ABOFT8	8" NPT steel, bolt-on flange 150#*	300	30	
M3ABOFT10	10" NPT steel, bolt-on flange 150#	300	41	

* picture shown

VIC COUPLERS

MADE IN CANADA



Part #	Description	PSI	Lbs.	Price
M3FRV6A	6" Vic coupler*	300	8	



M3FRV8A	8" Vic coupler*	300	18	
M3FRV10A	10" Vic coupler	300	21	
M3FRV12A	12" Vic coupler	200	27	

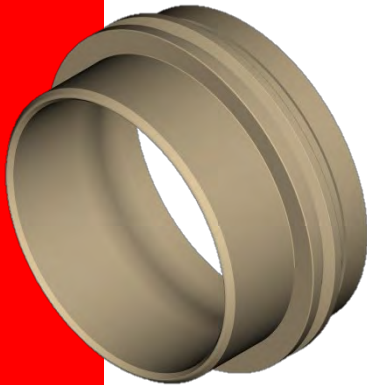
- 4 knurled ribs for holding strength
- Nut-and-bolt style, stainless
- Inside lip on segment for ease of installation
- Type III hard anodized (plain optional)
- * picture shown

VIC/SHUG ADAPTERS

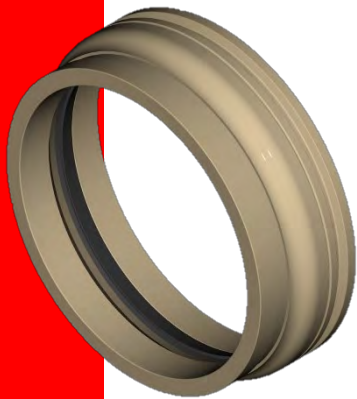
MADE IN CANADA



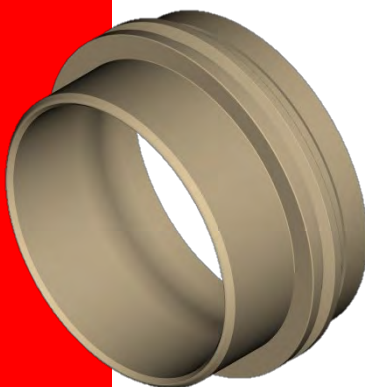
Part #	Description	PSI	Lbs.	Price
M3A10SHF10VA	10" female shug—10" Vic*	300	15	



M3A8SHM8VA	8" male shug—8" Vic	300	6	
M3A10SHM8VA	10" male shug—8" Vic	300	11	
M3A10SHM10VA	10" male shug—10" Vic*	300	8	
M3A10SHM12VA	10" male shug—12" Vic	200	6	



M3A10HFF10VA	10" female HF—10" Vic*	300	6	
--------------	------------------------	-----	---	--



M3A10HFM8VA	10" male HF—8" Vic	300	11	
M3A10HFM10VA	10" male HF—10" Vic*	300	8	

- Female adapters include gaskets
- 6061-T6 extruded aluminum
- Type III hard anodized (plain optional)
- * picture shown

VIC BARBS & SEGMENTS

MADE IN CANADA 



Part #	Description	PSI	Lbs.	Price
M3FRBRB6A	6" Vic barb	300	6	
M3FRBRB8A	8" Vic barb*	300	8	
M3FRBRB10A	10" Vic barb	300	10	
M3FRBRB12A	12" Vic barb	200	11	



M3SEG6-3A	6" Vic segment set*	300	5	
-----------	---------------------	-----	---	--

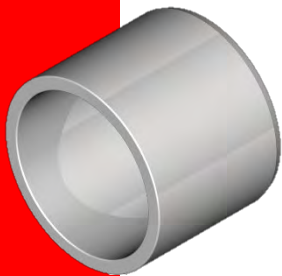


M3FRSEG8-4A	8" Vic segment set*	300	10	
M3FRSEG10-4A	10" Vic segment set	300	11	
M3FRSEG12-4A	12" Vic segment set	200	12	

- 4 ribs for holding strength (8"-12")
- Nut and bolt style, stainless
- Inside lip on segment for ease of installation
- Type III hard anodized (plain optional)
- * picture shown

CORNELL WEAR SLEEVES

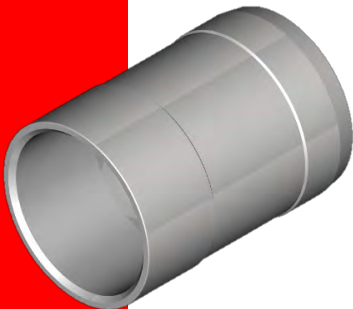
MADE IN CANADA



Part #	Description	Lbs.	Price
A20520-15-SI	4414 shaft sleeve (stainless)	1	



A21470-15-SI	4NHTB shaft sleeve (stainless)	1	
--------------	--------------------------------	---	--



A22448-15-SI	6NHTB shaft sleeve (stainless)	1	
--------------	--------------------------------	---	--

- Precision machined to Cornell specs
- Stainless steel

CORNELL WEAR RINGS

MADE IN CANADA



Part #	Description	Lbs.	Price
A20424-6-CI	4414 suction cover ring	1	
A20943-6-CI	4NHTB suction cover ring (410 stainless)	1	
A22440-6-SG	6NHTB suction cover ring (white iron)	6	
A22441-6-SG	6NHTB impeller ring (white iron)	3	

- Precision machined to Cornell specs
- High chrome white iron castings (460 BHN hardness)

PIONEER WEAR RINGS

MADE IN CANADA



Part #	Description	Lbs.	Price
M3P10901413	64S17, 17" suction cover wear ring (white iron)	4	

M3P109075149	64S17, 17" impeller wear ring (white iron)	7	
--------------	--	---	--

M3P1092610445	86S20, 20" suction cover wear ring (white iron)	4	
---------------	---	---	--

M3P1092610446	86S20, 20" impeller wear ring (white iron)	8	
---------------	--	---	--

- Precision machined to Pioneer specs
- High chrome white iron castings (460 BHN hardness)

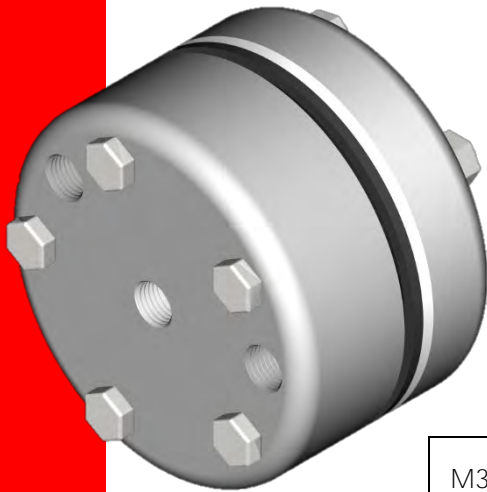
GAUGE PROTECTORS

MADE IN CANADA 



Part #	Description	Lbs.	Price
M3GAU-PROTEC	Standard single hole	1	

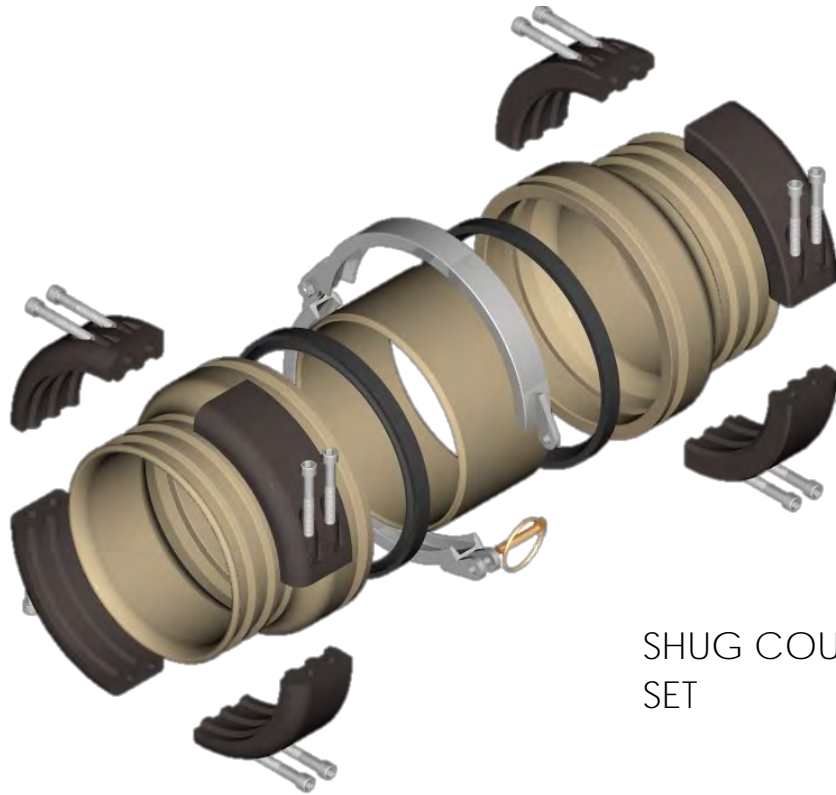
- Regular duty
- Stainless bolts
- 1 - 3/4" port and 1 - 1/4" port



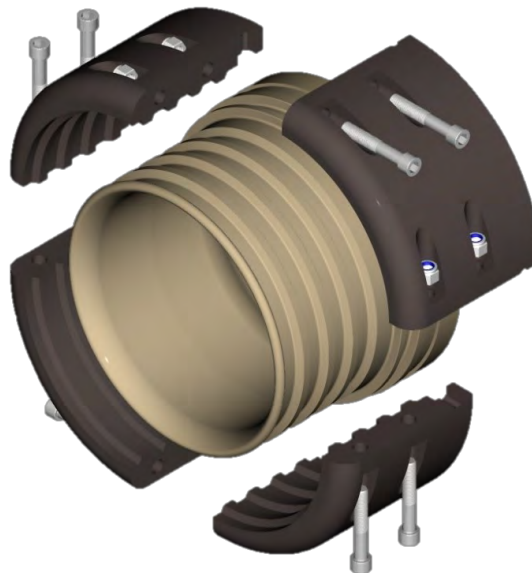
M3GAU-PROTEC3	Heavy-duty (micro port)	2	
---------------	-------------------------	---	--

- Heavy duty, micro port style designed to absorb high pressure spikes, saving gauges and sensors
- Stainless bolts
- 1 - 3/4" port and 3 - 1/4" ports

COUPLER STYLES



SHUG COUPLER
SET



VIC COUPLER

NOTES

COMPANY INFO

CONTACT INFORMATION

MAIN TELEPHONE	1-204-355-7634
HOURS	8am—5pm CST
INFORMATION	info@metal360.ca
ACCOUNTS	dietrich@metal360.ca
ORDERS	ray@metal360.ca
FAX	1-204-515-6160
WEBSITE	www.metal360.ca

SHIPPING ADDRESS

Metal 360 Inc.
41008 Rd 29E
Blumenort, Manitoba
R0A 0C0
Canada

MAILING ADDRESS

Metal 360 Inc.
Box 59 RR1
Ste. Anne, Manitoba
R5H 1R1
Canada

- Contact us for our current annual price list
- We do our best to ship "the next day" after order
- All our couplings are compatible with industry standards
- Please contact us for technical specifications
- PDF catalogue is available to download off our website
- Paper catalogues are available at no charge
- All products are made in Canada





DEALER: